

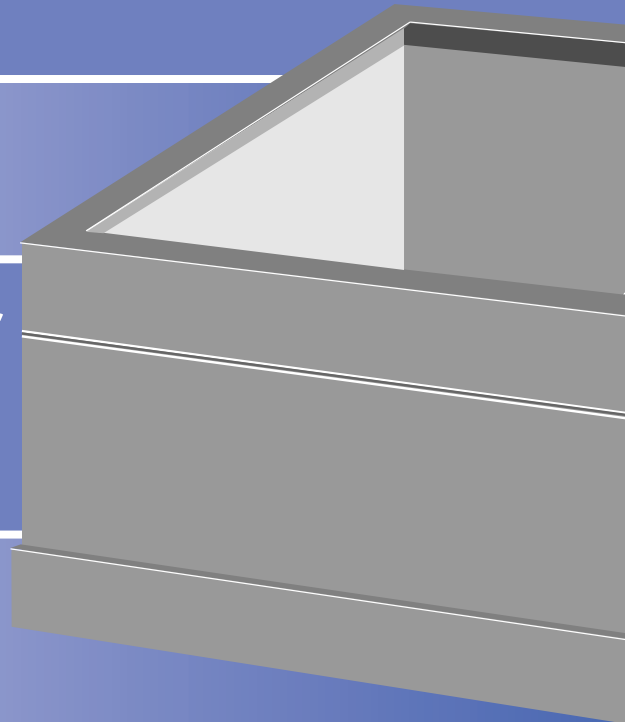
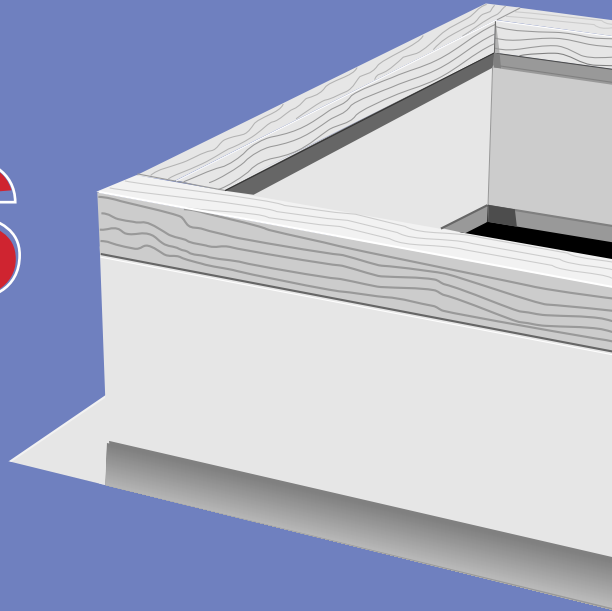
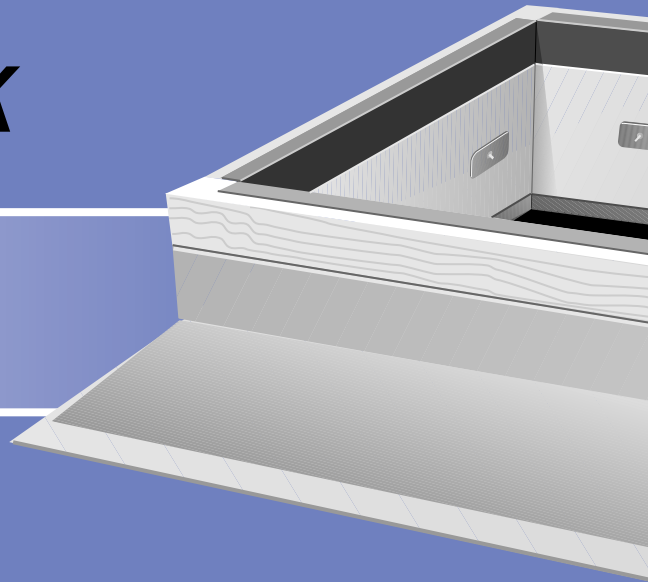


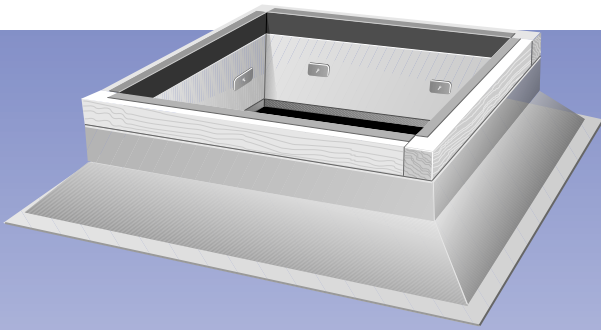
Prefab

ROOF CURBS

EXTENDED BASES
SOUND CURBS
EQUIPMENT SUPPORTS
BASES & ADAPTERS

*The Source for your
Fan Mounting
Accessories*





Models GPNS, GPS:

These curbs are designed for use on flat, non-insulated roof decks. They are mounted directly to the deck structure, then roofed and flashed to the top of the wood nailer for weather tightness. For pitched or ridged applications, see Models GPI and GPF.

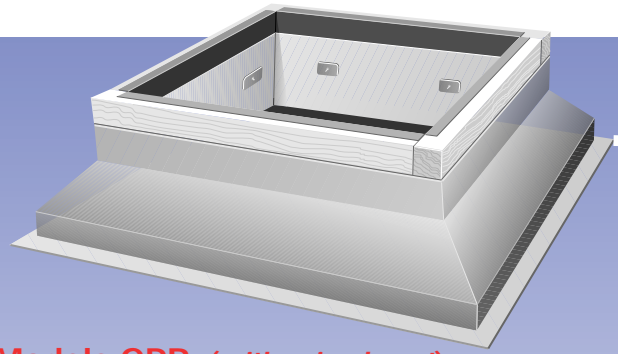
Construction

Model GPNS is tabbed and riveted. GPS is all welded. Models GPNS and GPS are available in aluminum (.064) or galvanized steel (18 ga.). 1" insulation (3# density) is standard.

Available Heights

Model GPNS: 8" and 12" only

Model GPS: 8" - 18" in 2" increments



Models GPR: (with raised cant)

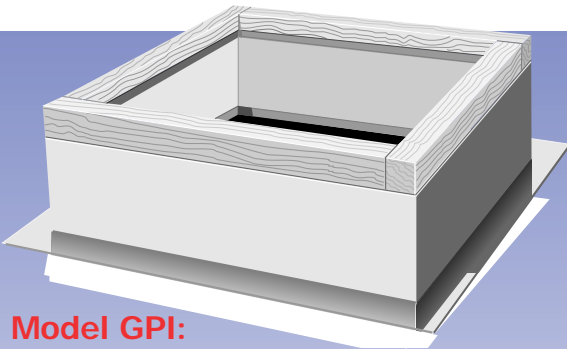
These curbs are designed for use on flat, insulated roof decks. They are mounted directly to the deck structure, then roofed and flashed to the top of the wood nailer for weather tightness. For pitched or ridged applications, see Models GPI and GPF.

Construction

GPR is all welded. Model GPR is available in aluminum (.064) or galvanized steel (18 ga.). 1" insulation (3# density) is standard.

Available Heights

Model GPR: 8"-18" in 2" increments. The raised cant is available from 1"-6" in 1/2" increments.



Model GPI:

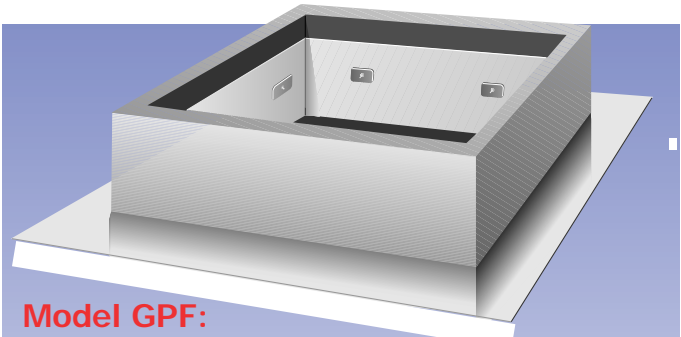
This curb is designed for roof decks that are covered with 2-6 inches of insulation. Model GPI is for use on flat roofs, Model GPIP for pitched roofs and Model GPIR is available for ridged (double pitched) roofs. All are mounted directly to the roof deck before the insulation is applied, then roofed and flashed to the top of the wood nailer for weather tightness .

Construction

Models GPI, GPIP and GPIR are available in aluminum (.064) or galvanized steel (18 ga.) and are all welded, with 1" insulation (3# density) .

Available Heights

All Models: 12" - 24"



Model GPF:

Designed for non-insulated roof decks, this curb is available in three models: Model GPF for flat roofs, Model GPF for pitched roofs and Model GPF for ridged (double pitched) roofs. All are mounted directly to the roof deck structure, then roofed to the vertical surface, and sealed to the 5" flashing flange.

Construction

Models GPF, GPF, and GPF are available in aluminum (.064) or galvanized steel (18 ga.) and are all welded, with 1" insulation (3# density).

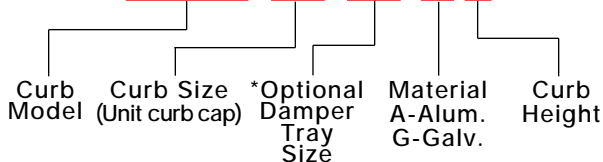
Available Heights

All Models: 8" through 24"

CURB MODEL NUMBER CODE

Square Curbs

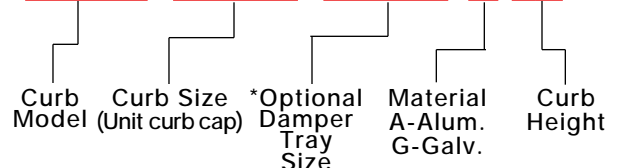
GPNS-34-24-G 8



*Shown only when specified

Rectangular Curbs

GPNS-30/42-22/34-A 12



SPECIAL PURPOSE CURBS AND ACCESSORIES

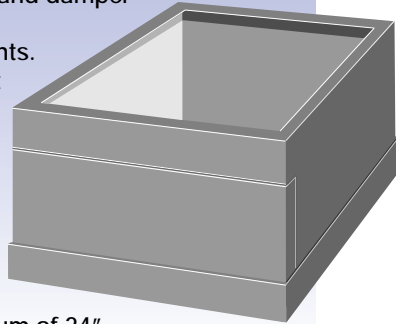
EXTENDED BASE

Model GPE

The GPE extended base is designed to provide easy access to the damper and damper actuator as well as fulfilling additional height requirements. GPE extended bases mount between the fan and roof curb.

Construction

Welded aluminum or galvanized steel with access door and damper tray. Heights range from a minimum of 12" to a maximum of 24".



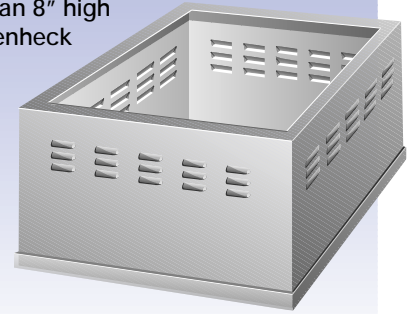
VENTED CURB EXTENSION

Model VCE

The VCE vented curb extension is designed for use with an 8" high roof curb and the Greenheck model CUBE fan to provide the required 40" minimum discharge height above the roof line (per NFPA 96).

Construction

Welded aluminum or galvanized steel.



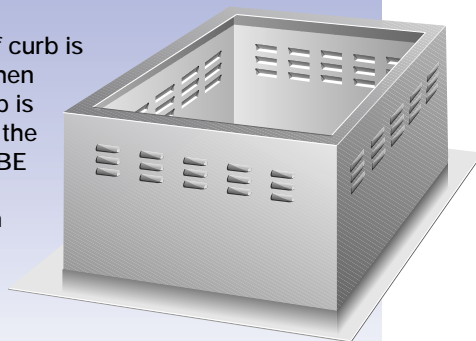
VENTED ROOF CURB

Model GPFV

The GPFV vented roof curb is typically used for kitchen applications. This curb is designed for use with the Greenheck Model CUBE fan to provide the required 40" minimum discharge height above the roof line (per NFPA 96).

Construction

Welded aluminum or galvanized steel.



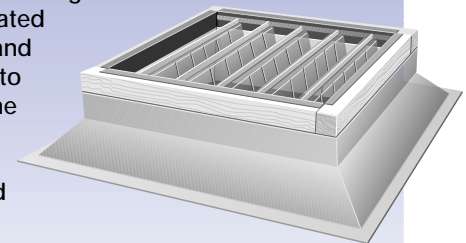
SOUND CURB

Model AT

The AT sound curb is designed to attenuate fan generated sound. Model ATS and ATR mount directly to the roof deck and the ATE is an extension that mounts between the fan and the roof curb.

Construction

Welded aluminum or galvanized steel with damper tray. See the Greenheck sound curb catalog for more details.



INSECT SCREEN BASE

Model ISB

Insect screen bases are available for applications where the building must be completely free of insects, as in food processing operations.

Construction

Aluminum or galvanized steel with a fine mesh screen. Two access doors are provided for removal and cleaning of the screen. Insect screen bases mount between the fan and the roof curb, and provide an additional 6" of height.

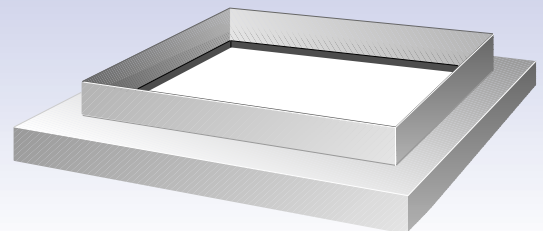


ADAPTERS AND REDUCERS

Used to adapt or reduce the standard fan curb cap dimension to a nonstandard specified size, within 10" of standard. Adapters and reducers are most commonly used to match existing roof curbs.

Construction

Welded aluminum or galvanized steel.



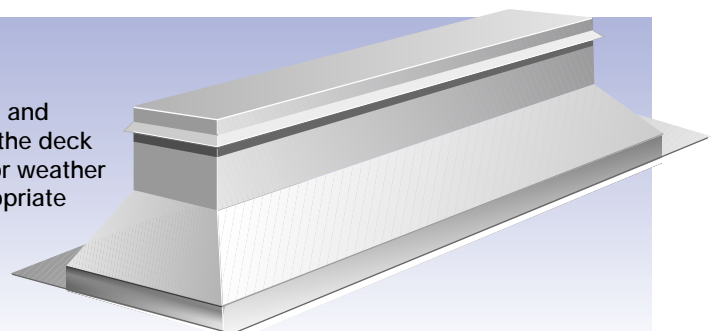
EQUIPMENT SUPPORTS

MODEL GESS & GESR

Equipment supports are designed for use on both insulated (GESR) and non-insulated (GESS) flat roof decks. They are mounted directly to the deck structure then roofed and flashed to the top of the wooden nailer for weather tightness. A variety of sizes and widths are available. See the appropriate submittal

Construction

Welded aluminum or galvanized steel.



ROOF CURB OPTIONS

DAMPER TRAY: Damper trays are available with all curb models. Damper trays are standard with models GPE and AT sound curbs.

TREATED WOOD NAILERS: Pressure treated wood nailers are available in lieu of standard non-treated nailers.

1 1/2" OR 2" INSULATION: Insulation is available in 1 1/2" or 2" thickness in lieu of standard 1" thickness

METAL LINER (Double Shell): A metal liner is available for insulated curb installations where it is not desirable for insulation to be exposed to the airstream.

HEAVIER GAUGE: Models GPS, GPR, GPI and GPF are available with outer shells constructed of 16 ga. galvanized steel or, 080 aluminum.

TO ORDER PITCHED AND RIDGED CURBS

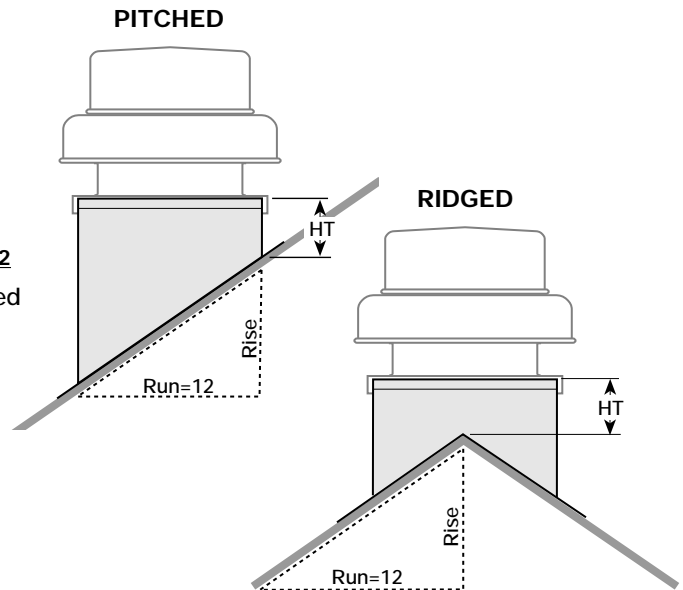
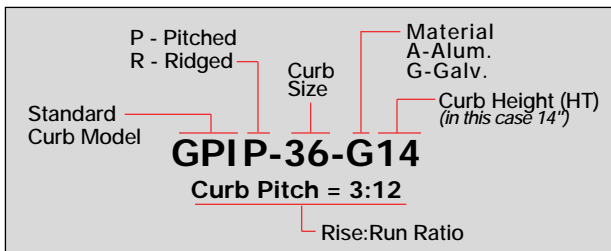
The following information is required:

1. Specify pitched or ridged.
2. Include roof rise and run (see diagrams). This will be represented as a ratio (rise:run) with run always expressed as 12 units. Units *must* be of same measure (inches, feet, CM, etc.).

Example: A roof with a Rise of 3" and a Run of 12" - Pitch = 3:12

3. When specifying a rectangular curb, note whether it is pitched on the short or long side.

Example of typical pitched curb model number:



BASIC CURB DIMENSIONAL INFORMATION

For Models: GPNS, GPNR, GPS, GPR, GPI, ATS, ATR

AD = 1 1/2" less than the unit curb cap dimension.

B = AD dim. + 8 1/4" for all represented by (Fig. 1).

B = AD dim. + 4" for model GPI only (Fig. 2).

For Models: GPF, GPFV

AD = 1/2" less than the unit curb cap dimension.

B = AD dim. + 10" (Fig. 2).

For Models: GPE, VCE, ATE, ISB

AD = 1/2" less than the unit curb cap dimension.

B = same as the unit curb cap dimension (Fig. 3).

See submittals for complete dimensional information.

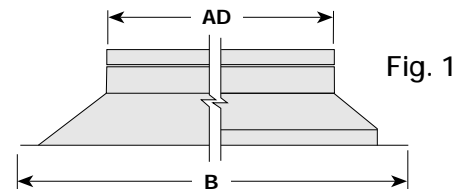


Fig. 1

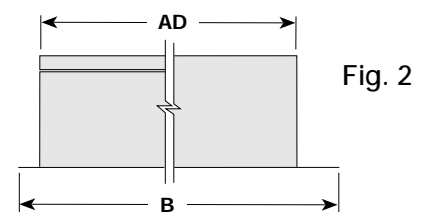


Fig. 2

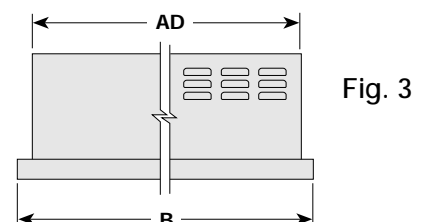


Fig. 3