

Application and Design

EACN-601 is a combination weather louver and air shut-off damper designed to protect air intake and exhaust openings in building exterior walls. Design incorporates a drainable head and J style blades. The integral damper is normally motorized. When open, the damper permits airflow through the louver, and when closed it provides a tight seal to the passage of air and weather. The EACN-601 is an extremely efficient louver/damper with **AMCA LICENSED PERFORMANCE DATA** enabling designers to select and apply with confidence.

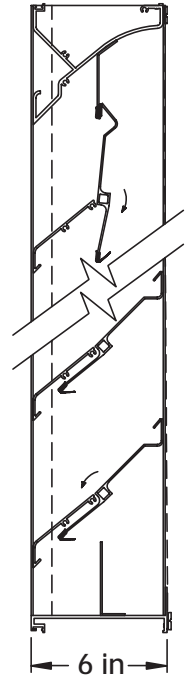
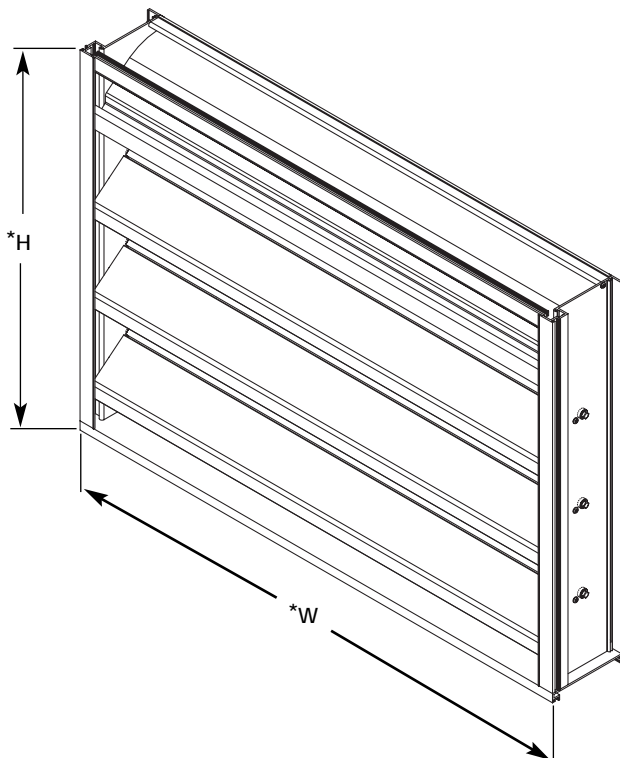


Standard Construction

Frame:	Heavy gauge 6063T5 extruded aluminum, 6 in. x 0.125 in. nominal dimensions
Blades:	Stationary blade - J style, 6063T5 extruded aluminum, 0.081 in. nominal wall thickness, positioned at 45° angle on approximately 6 in. centers. Adjustable blade - 6063T5 extruded aluminum 0.081 in. nominal wall thickness
Seals:	Extruded dual-durometer vinyl blade seals - compressible stainless steel jamb seals
Linkage:	Side linkage out of airstream, concealed in frame
Bearings:	Synthetic sleeve type
Birdscreen:	3/4 in. x .051 in. flattened expanded aluminum in removable frame. Screen is mounted on inside (rear)
Axles:	1/2 in. diameter plated steel
Operator:	Locking louver quadrant
Finish:	Mill Finish
Minimum Size:	12 in. W x 16 in. H
Maximum Size:	60 in. W x 96 in. H (see page 4)

Options

- Flanged frame
- Extended sill
- A variety of bird and insect screens
- A variety of architectural finishes including:
 - Clear anodize
 - Integral color anodize
 - Baked enamel
 - Kynar
- A variety of pneumatic and electric actuators
- Glazing adapter
- Hinged frame
- Security bars
- Manual operators (handcrank)



* W & H Dimensions furnished approximately 1/4 in. under size.

EACN-601 Louver Performance Data

**AMCA
CERTIFIED
RATINGS**

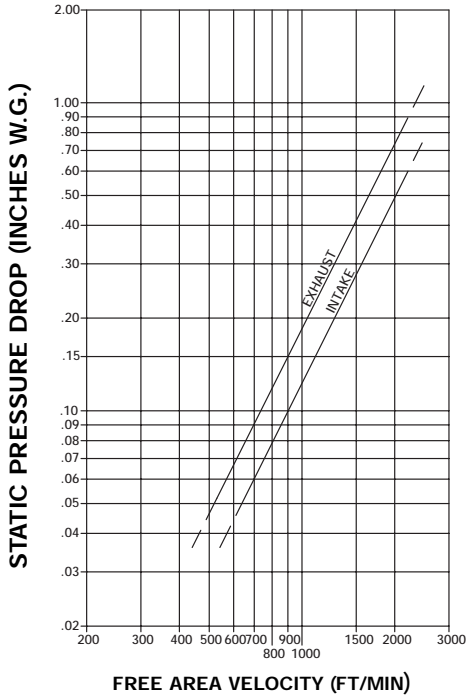
**WATER
PENETRATION
AIR
PERFORMANCE**

**AIR
MOVEMENT
AND CONTROL
ASSOCIATION, INC.**

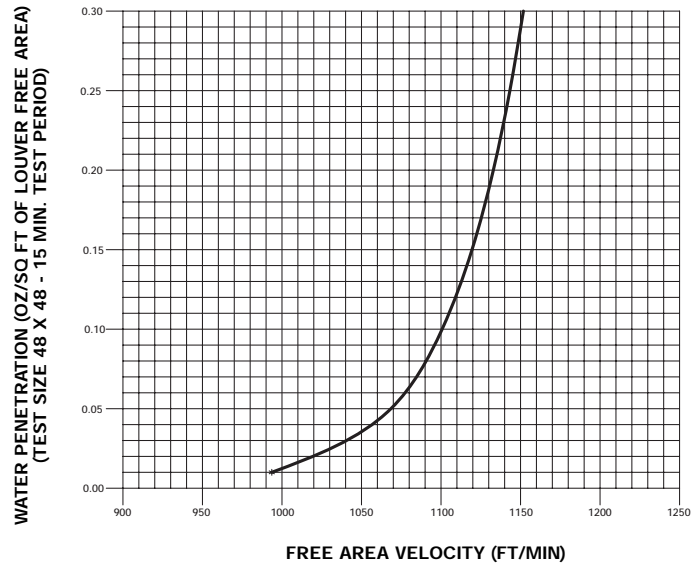
AMCA 2100-10/11/12/13/14/15/16/17/18/19/20/21/22/23/24/25/26/27/28/29/30/31/32/33/34/35/36/37/38/39/40/41/42/43/44/45/46/47/48/49/50/51/52/53/54/55/56/57/58/59/60/61/62/63/64/65/66/67/68/69/70/71/72/73/74/75/76/77/78/79/80/81/82/83/84/85/86/87/88/89/90/91/92/93/94/95/96/97/98/99/100

Greenheck certifies that the EACN-601 louvers shown herein are licensed to bear the AMCA Seal. The ratings shown are based on tests and procedures performed in accordance with AMCA Publication 511 and comply with the requirements of the AMCA Certified Ratings Program. The AMCA Certified Ratings Seal applies only to air performance and water penetration ratings.

Airflow Resistance (Standard Air - .075 lb/ft³)



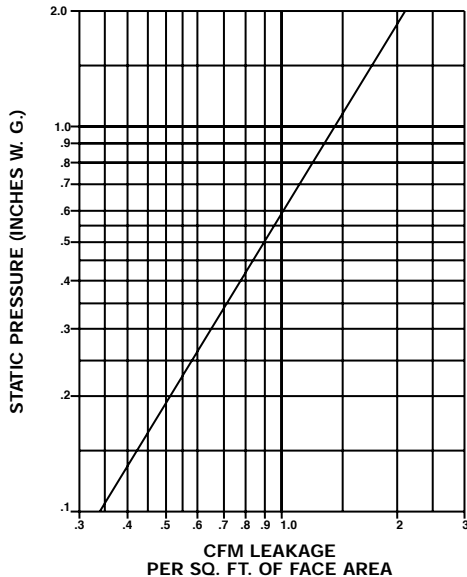
Water Penetration (Standard Air - .075 lb/ft³)



Model EACN-601 resistance to airflow is shown with damper blades fully open. Resistance (pressure drop) varies depending on louver application (air intake or air exhaust). Free area velocities (shown) are higher than average velocity through the overall louver size. See louver selection information.

The AMCA Water Penetration Test provides a method for comparing various louver models and designs as to their efficiency in resisting the penetration of rainfall under specific laboratory test conditions. The point of zero water penetration is defined as that velocity where the water penetration curve projects through .01 oz. of water (penetration) per sq. ft. of louver free area. ***The beginning point of water penetration for Model EACN-601 is 994 fpm free area velocity.** These performance ratings do not guarantee a louver to be weatherproof or stormproof and should be used in combination with other factors including good engineering judgement in selecting louvers.

Air Leakage with Damper Section Closed



The AMCA certified ratings seal applies to air performance and water penetration only.

Louver Selection and Application

Application of any louver involves selecting an airflow velocity through the louver free area (free area velocity in fpm) that produces an acceptable pressure drop and for intake applications minimizes carry through of normally encountered rain water.

No louver manufacturer warrants their louver to prevent water penetration under all possible combinations of wind and rain. Water penetration through Model EACN-601 begins at 994 fpm free area velocity. Intake air louver selection using free area velocity below 994 fpm is recommended. Louver selection involves the following two steps, and depending on given conditions, either step may come first.

Select Free Area Velocity:

Using the **Airflow Resistance Chart**, select a free area velocity that produces an acceptable pressure drop with minimal water penetration. (Water penetration need not be considered when selecting exhaust louvers.)

Determine Louver Free Area:

Using the free area velocity from previous step and total cfm, determine Louver Free Area required. Using **Louver Free Area Chart**, select a louver with the required free area. If louver size is given, determine free area from chart and work backwards to determine maximum airflow. See examples below.

Free Area Chart

Louver Height Inches	Louver Width in Inches														Louver Height Inches
	12	15	18	21	24	27	30	33	36	39	42	48	54	60	
16	0.29	0.39	0.48	0.58	0.67	0.77	0.86	0.96	1.05	1.15	1.24	1.43	1.62	1.81	16
18	0.29	0.39	0.48	0.58	0.67	0.77	0.86	0.96	1.05	1.15	1.24	1.43	1.62	1.81	18
21	0.52	0.69	0.86	1.03	1.20	1.36	1.53	1.70	1.87	2.04	2.21	2.55	2.88	3.22	21
24	0.54	0.71	0.89	1.06	1.24	1.41	1.59	1.76	1.94	2.11	2.28	2.63	2.98	3.33	24
27	0.73	0.97	1.21	1.45	1.69	1.92	2.16	2.40	2.64	2.88	3.11	3.59	4.07	4.54	27
30	0.78	1.04	1.29	1.55	1.80	2.05	2.31	2.56	2.82	3.07	3.33	3.83	4.34	4.85	30
33	0.95	1.25	1.56	1.87	2.18	2.48	2.79	3.10	3.40	3.71	4.02	4.63	5.25	5.86	33
36	1.03	1.36	1.70	2.03	2.36	2.70	3.03	3.37	3.70	4.03	4.37	5.03	5.70	6.37	36
39	1.03	1.36	1.70	2.03	2.36	2.70	3.03	3.37	3.70	4.03	4.37	5.03	5.70	6.37	39
42	1.27	1.69	2.10	2.51	2.93	3.34	3.75	4.17	4.58	4.99	5.41	6.23	7.06	7.89	42
45	1.27	1.69	2.10	2.51	2.93	3.34	3.75	4.17	4.58	4.99	5.41	6.23	7.06	7.89	45
48	1.52	2.01	2.51	3.00	3.49	3.98	4.48	4.97	5.46	5.96	6.45	7.43	8.42	9.41	48
51	1.52	2.01	2.51	3.00	3.49	3.98	4.48	4.97	5.46	5.96	6.45	7.43	8.42	9.41	51
54	1.77	2.34	2.91	3.48	4.05	4.63	5.20	5.77	6.34	6.92	7.49	8.63	9.78	10.92	54
60	1.99	2.64	3.28	3.93	4.58	5.22	5.87	6.52	7.16	7.81	8.45	9.75	11.04	12.33	60
66	2.21	2.92	3.64	4.35	5.07	5.78	6.50	7.21	7.93	8.64	9.36	10.79	12.22	13.65	66
72	2.42	3.20	3.99	4.77	5.56	6.34	7.13	7.91	8.69	9.48	10.26	11.83	13.40	14.97	72
78	2.50	3.31	4.12	4.93	5.75	6.56	7.37	8.18	8.99	9.80	10.61	12.23	13.86	15.48	78
84	2.75	3.64	4.53	5.42	6.31	7.20	8.09	8.98	9.87	10.76	11.65	13.43	15.22	17.00	84
90	2.99	3.96	4.93	5.90	6.87	7.84	8.81	9.78	10.75	11.72	12.69	14.63	16.58	18.52	90
96	3.24	4.29	5.34	6.39	7.44	8.49	9.54	10.59	11.64	12.69	13.74	15.83	17.93	20.03	96

Louver Free Area in Square Feet

EACN-601 Selection and Examples

Example 1:

Airflow given as 5000 cfm – select louver size.

- A. Determine louver free area by dividing airflow by free area velocity (do not exceed 994 fpm on intake louver application).

$$\frac{5000 \text{ cfm}}{\text{Airflow}} \div \frac{994 \text{ fpm}}{\text{Free Area Velocity}} = \frac{5.03 \text{ ft.}^2}{\text{Required Louver Free Area}}$$

- B. Select a louver with at least the required louver free area from **Free Area Chart** above.

$$\frac{48 \text{ in. W} \times 36 \text{ in. H}}{5.03 \text{ ft.}^2 \text{ free area}} \times 994 \text{ fpm free area velocity (5000 cfm} \div 5.03 \text{ ft.}^2 \text{ F.A.)}$$

(Other selections available – See **Free Area Chart** above.)

- C. Check the pressure drop of the selected louver at the given airflow (**Airflow Resistance Chart** on Page 2).

$$\Delta P \text{ at } \frac{994 \text{ fpm}}{\text{Free Area Velocity}} = \frac{0.120 \text{ in. w.g.}}{\text{Pressure Drop}}$$

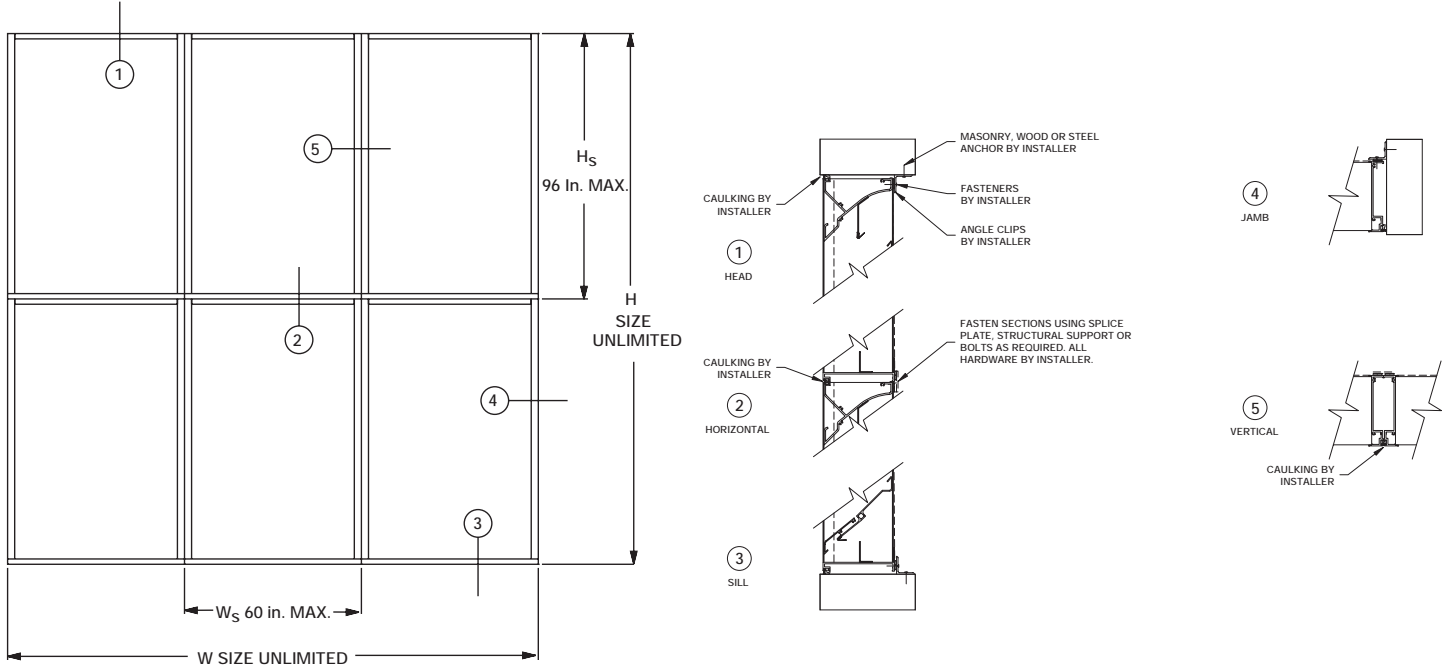
Example 2:

Louver size given as 48 x 48 – determine maximum airflow.

- A. Use **Free Area Chart** to determine Free Area = 7.43 ft.²
- B. Multiply Free Area x Free Area Velocity (Do not exceed 994 fpm on intake louver applications).
- $$\frac{7.43 \text{ ft.}^2 \times 994 \text{ fpm}}{\text{Free Area} \quad \text{Free Area Velocity}} = \frac{7385 \text{ cfm}}{\text{Maximum Airflow}}$$
- C. Check the pressure drop of the selected louver at the given airflow (**Airflow Resistance Chart** on Page 2).
- $$\Delta P \text{ at } \frac{994 \text{ fpm}}{\text{Free Area Velocity}} = \frac{0.120 \text{ in. w.g.}}{\text{Pressure Drop}}$$

Maximum Size and Installation Information

Maximum single section size for Model EACN-601 is 60 in. W x 96 in. H, and individual sections are designed to withstand wind loadings of 25 pounds per square foot (100 mph wind equivalent). Larger sizes require field assembly of equal size louver sections required to make up the overall louver size. Angles, clips, splice plates, bolts, and other fasteners required to install louvers and/or assemble louver sections are not provided with the louvers and must be supplied by the installing contractor. Louver assemblies (larger than 60 in. W x 96 in. H) require bracing or support (supplied by installer) from building structure at louver section joints to provide overall structural integrity. Details shown are general in nature. Additional information on louver installation may be found in AMCA Publication #501, Louver Application Manual.



Maximum Louver Size Information

W = Overall width - unlimited
H = Overall height - unlimited

W_s = Single section width - 60 in. maximum
H_s = Single section height - 96 in. maximum

Maximum Factory Assembled Size

60 in. W x 96 in. H

EACN-601 Specifications

Louvers meeting the following specifications shall be furnished and installed where shown on the plans and/or as described in schedules. Louvers shall be combination type incorporating both stationary and adjustable blades within a single 6 in. louver frame. Adjustable blades or damper section shall be of low-leakage design incorporating pressure activated vinyl blade edge and compressible stainless steel jamb seals. When closed, adjustable blades provide an extremely tight seal to air leakage and weather. The head member shall incorporate an integral gutter and each jamb shall incorporate an integral downspout so water drains to the head end, then down the downspouts and out at the louver sill. Each stationary blade shall be J style positioned at a 45° angle.

Each factory-assembled louver section shall be designed to withstand wind loadings of 25 pounds per square foot (100 mph wind equivalent). Louvers larger than 60 in. W x 96 in. H shall be built up by the installing contractor from factory-assembled louver sections. Louver frames, mullions, and section joints shall be adequately supported from the building structure to withstand this same wind loading.

Louver performance data shall be licensed under the AMCA Certified Ratings Program and shall bear the AMCA Certified

Ratings Seal. This certified performance data shall include airflow pressure loss, water penetration, and shall demonstrate performance equal to or better than the Greenheck model specified.

Louvers shall be Greenheck Model EACN-601 combination type fabricated from 6063T5 aluminum extrusions of .081 in. nominal wall thickness. Blades shall be positioned at 45° angles approximately on 6 in. centers. Blade linkage shall be concealed in jamb out of airstream.

Specifier select one of the following finish specifications:

Louvers shall be supplied with standard mill finish.

Louvers shall be supplied with a baked enamel finish applied after a thorough cleaning and preparation of the metal surface. A total dry film thickness of approximately 1.2 mils shall be provided. Color shall be (specify color from standard color chart).

Louvers shall be supplied with a Kynar finish applied following a thorough cleaning and pretreatment of the metal surface. Dry film thickness of the Kynar shall be approximately 1.2 mils after baking at 450°F. Color shall be (specify color from standard color chart).

